



The finer side of life



A part of HiLITE city



A WORLD WITHIN ITSELF

One of India's largest mixed-use developments

Pinpointed as the heartthrob of Calicut city, the HiLITE City is a world on its own with the most prestigious residential, commercial and retail spaces. Often described as an aesthete's heaven, HiLITE City is the perfect balance of greenery and luxury! Live life beyond your wildest dreams here, at Calicut's most sought out hub!

As a feather to the crown of the group of residential towers, the HiLITE Florina is a perfect piece of beauty with class. Flawlessly constructed, the HiLITE Florina is the most ideal pick for community living. The tower with 19 floors (Basement +G + 18), with 70 apartments, makes sure that you experience the most cherishing moments at home. The remarkable amenities of the HiLITE Florina shouts out elegance in its every angle. Definitely, it will soothe you with its comfort and grandeur-like structure. Without any doubt, HiLITE Florina becomes every man's dream home. With its excellent craftsmanship, HiLITE Florina skips ordinary styles of art. The tower gives you the most captivating piece of elegance and will be the best choice you can ever make!



A part of HiLITE city

Feel at home every moment

CREDAI



K Rera Approved
www.rera.kerala.gov.in

Building Permit No: A4-BA(199173)/2021
Olavanna Gramapachayath, Kozhikode



Convenience & Comfort!

Luxury in each detail

The newest addition to the ever-expanding group of residential towers, HiLITE Florina is a picture-perfect example of what elegance looks like.

No compromise on privacy

Spread across the picturesque and pristine landscapes of HiLITE City, HiLITE Florina is your perfect choice for a cosy living. Each one of the apartment exudes pure bliss. Seclusion comes by default in these apartments as they are very exclusively placed with minimum common walls.

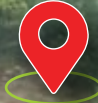
State-of-the-art Amenities

Built-in with various amenities, HiLITE Florina is every man's dream of a perfect home.

Gym Multi-purpose Hall Mini Swimming Pool Drivers' Room Centralised LPG system Caretaker's Room



A part of HiLITE city



Project Details

Location	:	HiLITE City
Total Built-up Area	:	136007 Sqft
Area of Land	:	70.15 Cents
No. of Floors	:	Basement + G + 18
No. of Apartments in each Floor	:	4 Nos
Total No. of Apartments	:	70 Nos
Size of Apartments	:	1798 sqft, 1610 sqft, 1330 sqft, 1633 sqft (Super built up area)

Typical Floor Plan



All dimensions are in centimeters | Dimensions may vary slightly during construction
Toilet dimensions are including tile finish | Furniture and fixtures are indicative only

Basement



Ground Floor Plan



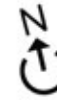
First Floor Plan



All dimensions are in centimeters | Dimensions may vary slightly during construction
Toilet dimensions are including tile finish | Furniture and fixtures are indicative only

TYPE A

1798 Sq. Ft Super Builtup Area
1232 Sq. Ft Carpet Area as per RERA



- A** Living
360X683
- B** Dining
426X360
- C** Master Bedroom
365X428
- D** Bedroom - 2
365X360
- E** Bedroom - 3
330X420
- F** Kitchen
250X310
- G** Toilet -1
150X250
- H** Toilet -2
240X150
- I** Toilet -3
200X255
- J** Utility
240X118
- k** Balcony - 1
108X381
- L** Balcony - 2
215X187
- M** Balcony - 3
330X118
- N** Balcony - 4
335X118



All dimensions are in centimeters | Dimensions may vary slightly during construction
Toilet dimensions are including tile finish | Furniture and fixtures are indicative only



A part of HiLITE city

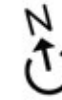
Elegance and convenience at its best!



*Photos & images are indicative only

TYPE B

1610 Sq. Ft Super Builtup Area
1118 Sq. Ft Carpet Area as per RERA



- A** Living
360X593
- B** Dining
426X330
- C** Master Bedroom
365X370
- D** Bedroom -2
365X330
- E** Bedroom -3
330X360
- F** Kitchen
250X250
- G** Toilet -1
150X240
- H** Toilet -2
240X150
- I** Toilet -3
200X235
- J** Utility
210X120
- K** Balcony-1
383X103
- L** Balcony-2
258X180
- M** Balcony-3
340X120

All dimensions are in centimeters | Dimensions may vary slightly during construction
Toilet dimensions are including tile finish | Furniture and fixtures are indicative only



A part of HiLITE city

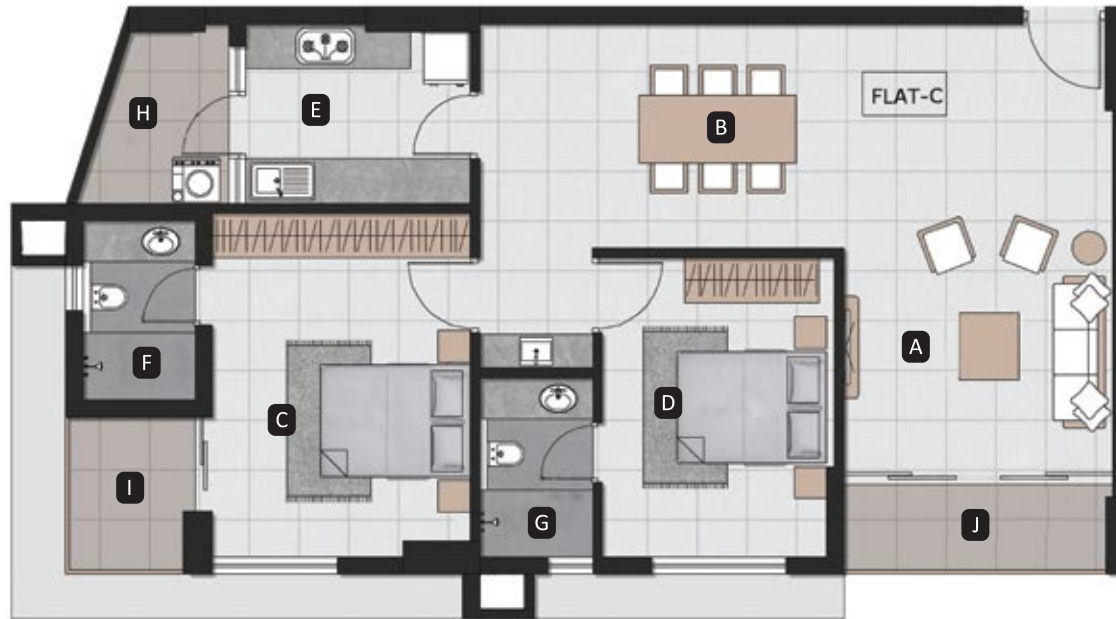
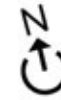
Nothing short of **art!**



*Photos & images are indicative only

TYPE C

1330 Sq. Ft Super Builtup Area
955 Sq. Ft Carpet Area as per RERA



- A** Living
360X593
- B** Dining
487X300
- C** Master Bedroom
345X460
- D** Bedroom -2
310X400
- E** Kitchen
300X240
- F** Toilet -1
150X240
- G** Toilet -2
151X240
- H** Utility
176X230
- I** Balcony-1
173X210
- J** Balcony-2
350X120



All dimensions are in centimeters | Dimensions may vary slightly during construction
Toilet dimensions are including tile finish | Furniture and fixtures are indicative only



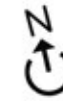
A part of HiLITE city

Class redefined!

*Photos & images are indicative only

TYPE D

1633 Sq. Ft Super Builtup Area
1142 Sq. Ft Carpet Area as per RERA



- A** Living
564X360
- B** Dining
320X343
- C** Master Bedroom
366X390
- D** Bedroom -2
363X390
- E** Bedroom -3
366X330
- F** Kitchen
270X365
- G** Toilet -1
240X150
- H** Toilet -2
240X150
- I** Toilet -3
243X150
- J** Utility
217X180
- k** Balcony-1
211X163
- L** Balcony-2
271X163
- M** Balcony-3
135X360

All dimensions are in centimeters | Dimensions may vary slightly during construction
Toilet dimensions are including tile finish | Furniture and fixtures are indicative only



A part of HiLITE city

When comfort **promises ecstasy!**

*Photos & images are indicative only

Specifications

Structure

- Foundation - RCC Foundation designed to suit the soil strata
- Superstructure & wall - RCC framed structure. All outside walls are in solid block masonry and all inside walls are in single brick/ solid block masonry

Flooring

- Vitrified tile flooring in the Foyer, Living, Kitchen, Dining, corridors and all Bedrooms

Toilet Walls

- First quality tiles for floors and walls upto false ceiling

Doors And Windows

- Hardwood frame with flush door shutter for entrance & bedrooms
- Hardwood frame with resin coated flush door for bathrooms
- Powder coated aluminium windows.

Painting

- Two coat putty, one coat primer and two coat premium emulsion for interior walls and ceiling
- Two coat exterior emulsion paint over primer coat

Electrical

- Three Phase concealed copper wiring with adequate light, fan and other plug points
- Premium quality modular switches
- Independent meters for each flat
- DG backup for all flats up to 1000 Watts
- Provision for AC in all bedrooms and living room
- Provision for exhaust fan in all toilets and kitchen
- Provision for geyser in all bathrooms

Kitchen

- Polished granite slab for kitchen counter
- Ceramic tile above counter to a height of 60cms

CP & Sanitary Fittings

- Reputed brands' wall hung sanitary fixtures with concealed cistern in all toilets
- Reputed brands' CP fittings

Security Systems

- CCTV coverage for selected common areas



Hi
LITE FLORINA

Hi
LITE ATHENA

LAYOUT

Our projects in HiLITE City

One of India's largest mixed-use developments and an infrastructural marvel of enormous size, the HiLITE City offers extraordinary lifestyle experiences and incredible investment opportunities under one roof. It houses a Business Park that caters to both IT and non-IT sectors alike, with an area of 10 lakh sq. ft., a shopping mall that covers an area of 13 lakh sq. ft., and 2000 premium residential apartments in which around 600 apartments are completed and the remaining are upcoming projects. HiLITE City also accommodates the new Club 6T6 that will shatter your perception of clubs.



The lifestyle destination



Ultra premium office spaces

Building permit number
BL-107/2009-2010
Olavanna Grama Panchayath



Hi LITE RESIDENCY

World Class Living Spaces



Hi LITE CORINTH

Ultra-luxe Apartments



Hi LITE LEPTIS

Ultra-luxe Apartments



Hi LITE ATHENA

Maximum living



Hi LITE CYRENE

Your perfect home



Hi LITE OLYMPUS

Luxury apartments



Hi LITE ATLANTIS

The ultimate tribute to luxury



CLUB 6T6

Reimagine class



HiLITE Builders Pvt Ltd

G 1003, Business Park, HiLITE City, NH 66, Thodayad Bypass, Calicut - 673014, Kerala
www.hilitebuilders.com

Call : +91 9847 33 22 44 | email : sales@hilitebuilders.com